
Function

The series 50th has a linear, elegant look, designed with attention to the smallest detail. All products were developed with great attention to aesthetics as well as to ease of installation and to the safety of a products made to last over time.

The entire range is finished with chrome plating, which guarantees a thicker coverage and, as a consequence, a better resistance to ageing and corrosion, not to mention a superior aesthetic appearance. Thermostatic valves allow to preset the flow rate.



Technical data

Max. working pressure:	10 bar
Max. differential pressure:	1 bar
Max. working temperature:	120 °C
Working fluids:	water in compliance with UNI 8065:2019

Materials

Valve body:	CW 617 N – DW UNI-EN 12165:2016
Obturator:	CW 614 N – DW UNI-EN 12164:2016
Gaskets:	Peroxide cured EPDM
Knob:	Chrome-plated/RAL9016 white ABS

Surface treatment

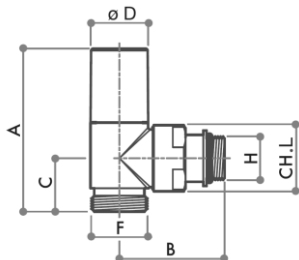
Chrome-plated / Powder coating paint, RAL9016 white

Dimensional Drawings

RS 259/A

Angle radiator valve, thermostatically or electronically controlled with protection cap.

Copper and plastic pipe G3/4 Eurokonus



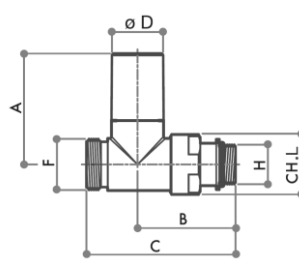
Code	Size	A	B	C	D	E
14202703	DN15 1/2	67	50	25	37	-
14202703CB	DN15 1/2	67	50	25	37	-
14202703B	DN15 1/2	67	50	25	37	-

Code	Size	F	G	H	L	M
14202703	DN15 1/2	G3/4 Ek	-	G1/2	28	-
14202703CB	DN15 1/2	G3/4 Ek	-	G1/2	28	-
14202703B	DN15 1/2	G3/4 Ek	-	G1/2	28	-

RD 258/A

Straight radiator valve, thermostatically or electronically controlled with protection cap.

Copper and plastic pipe G3/4 Eurokonus



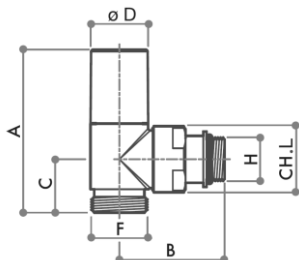
Code	Size	A	B	C	D	E
14402703	DN15 1/2	48	51	78	37	-
14402703CB	DN15 1/2	48	51	78	37	-
14402703B	DN15 1/2	48	51	78	37	-

Code	Size	F	G	H	L	M
14402703	DN15 1/2	G3/4 Ek	-	G1/2	28	-
14402703CB	DN15 1/2	G3/4 Ek	-	G1/2	28	-
14402703B	DN15 1/2	G3/4 Ek	-	G1/2	28	-

RS 2059/A

Angle radiator valve, thermostatically or electronically controlled, with manual control knob.

Copper and plastic pipe G3/4 Eurokonus



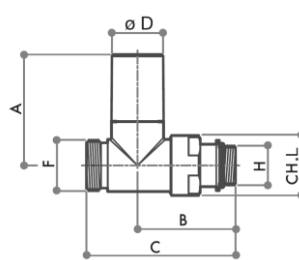
Code	Size	A	B	C	D	E
14242703	DN15 1/2	83	50	25	35	-
14242703CB	DN15 1/2	83	50	25	35	-
14242703B	DN15 1/2	83	50	25	35	-

Code	Size	F	G	H	L	M
14242703	DN15 1/2	G3/4 Ek	-	G1/2	28	-
14242703CB	DN15 1/2	G3/4 Ek	-	G1/2	28	-
14242703B	DN15 1/2	G3/4 Ek	-	G1/2	28	-

RD 2058/A

Straight radiator valve, thermostatically or electronically controlled, with manual control knob.

Copper and plastic pipe G3/4 Eurokonus



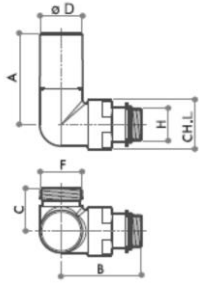
Code	Size	A	B	C	D	E
14422703	DN15 1/2	64	51	78	37	-
14422703CB	DN15 1/2	64	51	78	37	-
14422703B	DN15 1/2	64	51	78	37	-

Code	Size	F	G	H	L	M
14422703	DN15 1/2	G3/4 Ek	-	G1/2	28	-
14422703CB	DN15 1/2	G3/4 Ek	-	G1/2	28	-
14422703B	DN15 1/2	G3/4 Ek	-	G1/2	28	-

RCD 269/A

Coaxial right radiator valve, thermostatically or electronically controlled with protection cap.

Copper and plastic pipe G3/4 Eurokonus



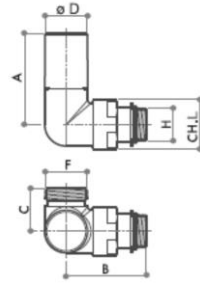
Code	Size	A	B	C	D	E
14272703	DN15 1/2	48	51	27	37	-
14272703CB	DN15 1/2	48	51	27	37	-
14272703B	DN15 1/2	48	51	27	37	-

Code	Size	F	G	H	L	M
14272703	DN15 1/2	G3/4 Ek	-	G1/2	28	-
14272703CB	DN15 1/2	G3/4 Ek	-	G1/2	28	-
14272703B	DN15 1/2	G3/4 Ek	-	G1/2	28	-

RCS 273/A

Coaxial left radiator valve, thermostatically or electronically controlled with protection cap.

Copper and plastic pipe G3/4 Eurokonus



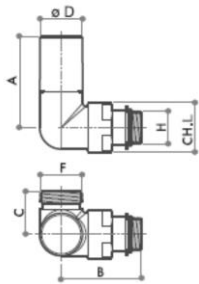
Code	Size	A	B	C	D	E
14292703	DN15 1/2	48	51	27	37	-
14292703CB	DN15 1/2	48	51	27	37	-
14292703B	DN15 1/2	48	51	27	37	-

Code	Size	F	G	H	L	M
14292703	DN15 1/2	G3/4 Ek	-	G1/2	28	-
14292703CB	DN15 1/2	G3/4 Ek	-	G1/2	28	-
14292703B	DN15 1/2	G3/4 Ek	-	G1/2	28	-

RCD 2069/A

Coaxial right radiator valve, thermostatically or electronically controlled, with manual control knob.

Copper and plastic pipe G3/4 Eurokonus



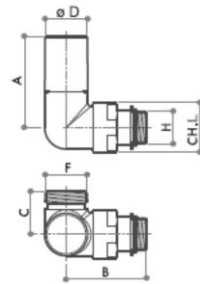
Code	Size	A	B	C	D	E
14312703	DN15 1/2	64	51	27	35	-
14312703CB	DN15 1/2	64	51	27	35	-
14312703B	DN15 1/2	64	51	27	35	-

Code	Size	F	G	H	L	M
14312703	DN15 1/2	G3/4 Ek	-	G1/2	28	-
14312703CB	DN15 1/2	G3/4 Ek	-	G1/2	28	-
14312703B	DN15 1/2	G3/4 Ek	-	G1/2	28	-

RCS 2073/A

Coaxial left radiator valve, thermostatically or electronically controlled, with manual control knob.

Copper and plastic pipe G3/4 Eurokonus

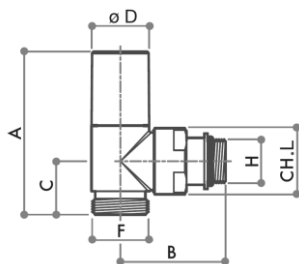


Code	Size	A	B	C	D	E
14332703	DN15 1/2	64	51	27	35	-
14332703CB	DN15 1/2	64	51	27	35	-
14332703B	DN15 1/2	64	51	27	35	-

Code	Size	F	G	H	L	M
14332703	DN15 1/2	G3/4 Ek	-	G1/2	28	-
14332703CB	DN15 1/2	G3/4 Ek	-	G1/2	28	-
14332703B	DN15 1/2	G3/4 Ek	-	G1/2	28	-

RS 59/A

Single adjustment angle radiator valve.
Copper and plastic pipe G3/4 Eurokonus

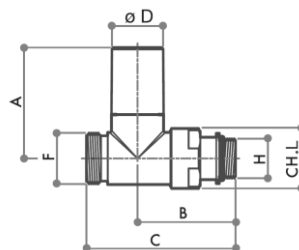


Code	Size	A	B	C	D	E
14122703	DN15 1/2	77	50	25	27	-
14122703CB	DN15 1/2	77	50	25	27	-
14122703B	DN15 1/2	77	50	25	27	-

Code	Size	F	G	H	L	M
14122703	DN15 1/2	G3/4 Ek	-	G1/2	28	-
14122703CB	DN15 1/2	G3/4 Ek	-	G1/2	28	-
14122703B	DN15 1/2	G3/4 Ek	-	G1/2	28	-

RD 58/A

Single adjustment straight radiator valve.
Copper and plastic pipe G3/4 Eurokonus

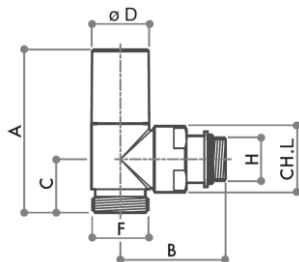


Code	Size	A	B	C	D	E
14322703	DN15 1/2	58	51	78	37	-
14322703CB	DN15 1/2	58	51	78	37	-
14322703B	DN15 1/2	58	51	78	37	-

Code	Size	F	G	H	L	M
14322703	DN15 1/2	G3/4 Ek	-	G1/2	28	-
14322703CB	DN15 1/2	G3/4 Ek	-	G1/2	28	-
14322703B	DN15 1/2	G3/4 Ek	-	G1/2	28	-

DS 79/A

Angle regulating lockshield valve.
Copper and plastic pipe G3/4 Eurokonus

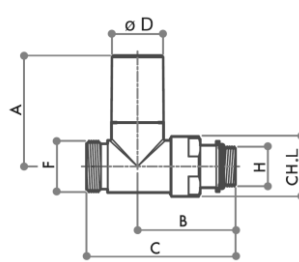


Code	Size	A	B	C	D	E
14162703	DN15 1/2	62	50	25	27	-
14162703CB	DN15 1/2	62	50	25	27	-
14162703B	DN15 1/2	62	50	25	27	-

Code	Size	F	G	H	L	M
14162703	DN15 1/2	G3/4 Ek	-	G1/2	28	-
14162703CB	DN15 1/2	G3/4 Ek	-	G1/2	28	-
14162703B	DN15 1/2	G3/4 Ek	-	G1/2	28	-

DD 78/A

Straight regulating lockshield valve.
Copper and plastic pipe G3/4 Eurokonus

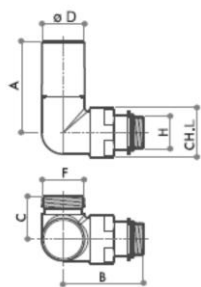


Code	Size	A	B	C	D	E
14362703	DN15 1/2	42	51	78	27	-
14362703CB	DN15 1/2	42	51	78	27	-
14362703B	DN15 1/2	42	51	78	27	-

Code	Size	F	G	H	L	M
14362703	DN15 1/2	G3/4 Ek	-	G1/2	28	-
14362703CB	DN15 1/2	G3/4 Ek	-	G1/2	28	-
14362703B	DN15 1/2	G3/4 Ek	-	G1/2	28	-

RCD 69/A

Single adjustment coaxial right radiator valve.
Copper and plastic pipe G3/4 Eurokonus

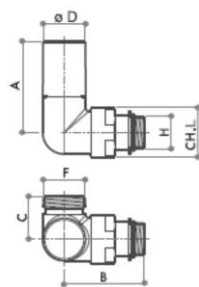


Code	Size	A	B	C	D	E
14192703	DN15 1/2	58	51	27	27	-
14192703CB	DN15 1/2	58	51	27	27	-
14192703B	DN15 1/2	58	51	27	27	-

Code	Size	F	G	H	L	M
14192703	DN15 1/2	G3/4 Ek	-	G1/2	28	-
14192703CB	DN15 1/2	G3/4 Ek	-	G1/2	28	-
14192703B	DN15 1/2	G3/4 Ek	-	G1/2	28	-

RCS 73/A

Single adjustment coaxial left radiator valve.
Copper and plastic pipe G3/4 Eurokonus

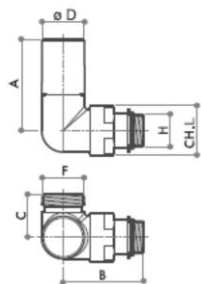


Code	Size	A	B	C	D	E
14212703	DN15 1/2	58	51	27	27	-
14212703CB	DN15 1/2	58	51	27	27	-
14212703B	DN15 1/2	58	51	27	27	-

Code	Size	F	G	H	L	M
14212703	DN15 1/2	G3/4 Ek	-	G1/2	28	-
14212703CB	DN15 1/2	G3/4 Ek	-	G1/2	28	-
14212703B	DN15 1/2	G3/4 Ek	-	G1/2	28	-

DCS 33/A

Coaxial left regulating lockshield valve.
Copper and plastic pipe G3/4 Eurokonus

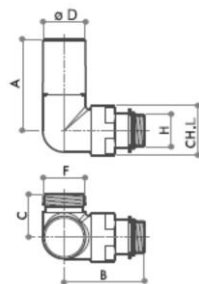


Code	Size	A	B	C	D	E
14252703	DN15 1/2	42	51	27	27	-
14252703CB	DN15 1/2	42	51	27	27	-
14252703B	DN15 1/2	42	51	27	27	-

Code	Size	F	G	H	L	M
14252703	DN15 1/2	G3/4 Ek	-	G1/2	28	-
14252703CB	DN15 1/2	G3/4 Ek	-	G1/2	28	-
14252703B	DN15 1/2	G3/4 Ek	-	G1/2	28	-

DCD 29/A

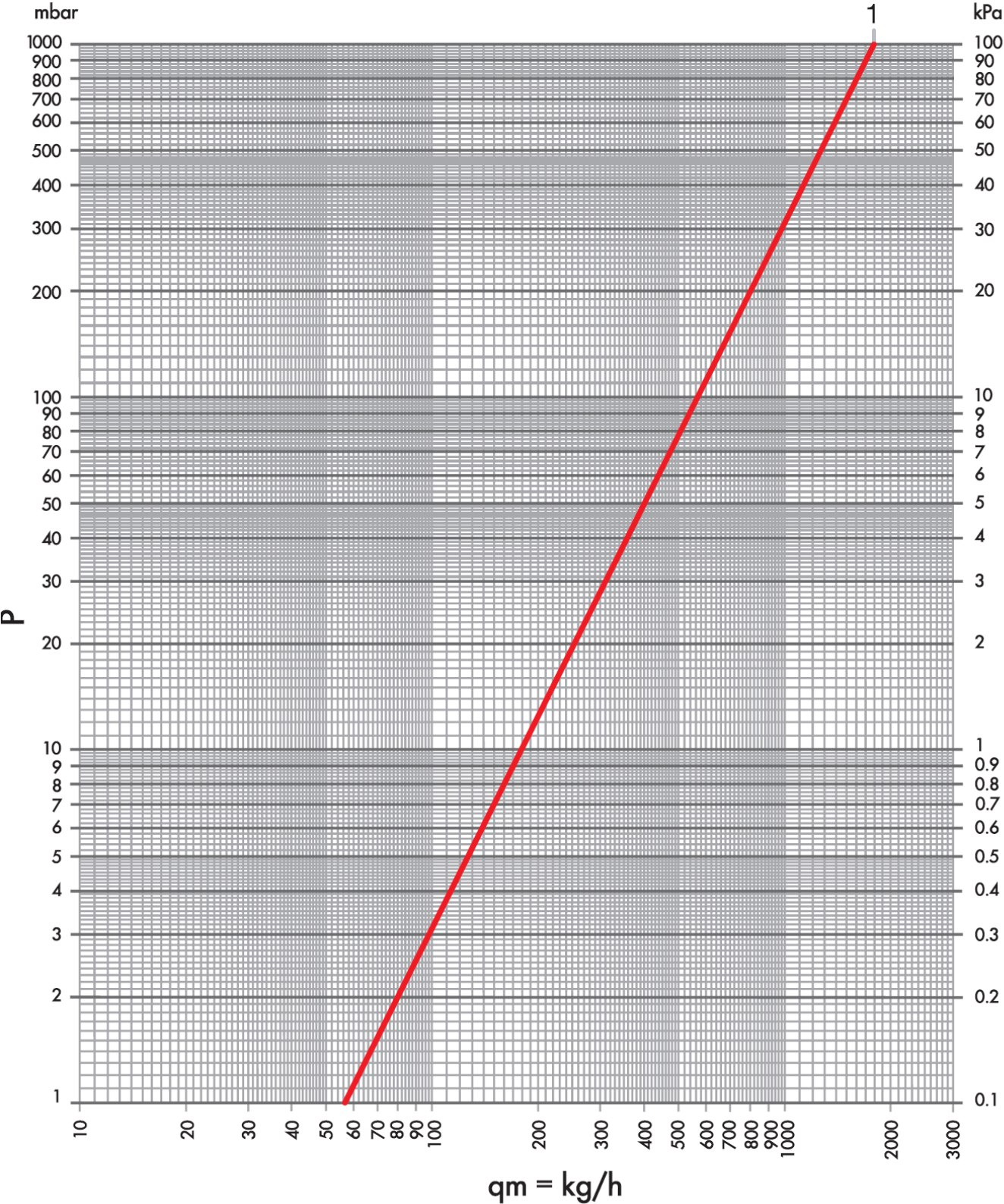
Coaxial right regulating lockshield valve.
Copper and plastic pipe G3/4 Eurokonus



Code	Size	A	B	C	D	E
14232703	DN15 1/2	42	51	27	27	-
14232703CB	DN15 1/2	42	51	27	27	-
14232703B	DN15 1/2	42	51	27	27	-

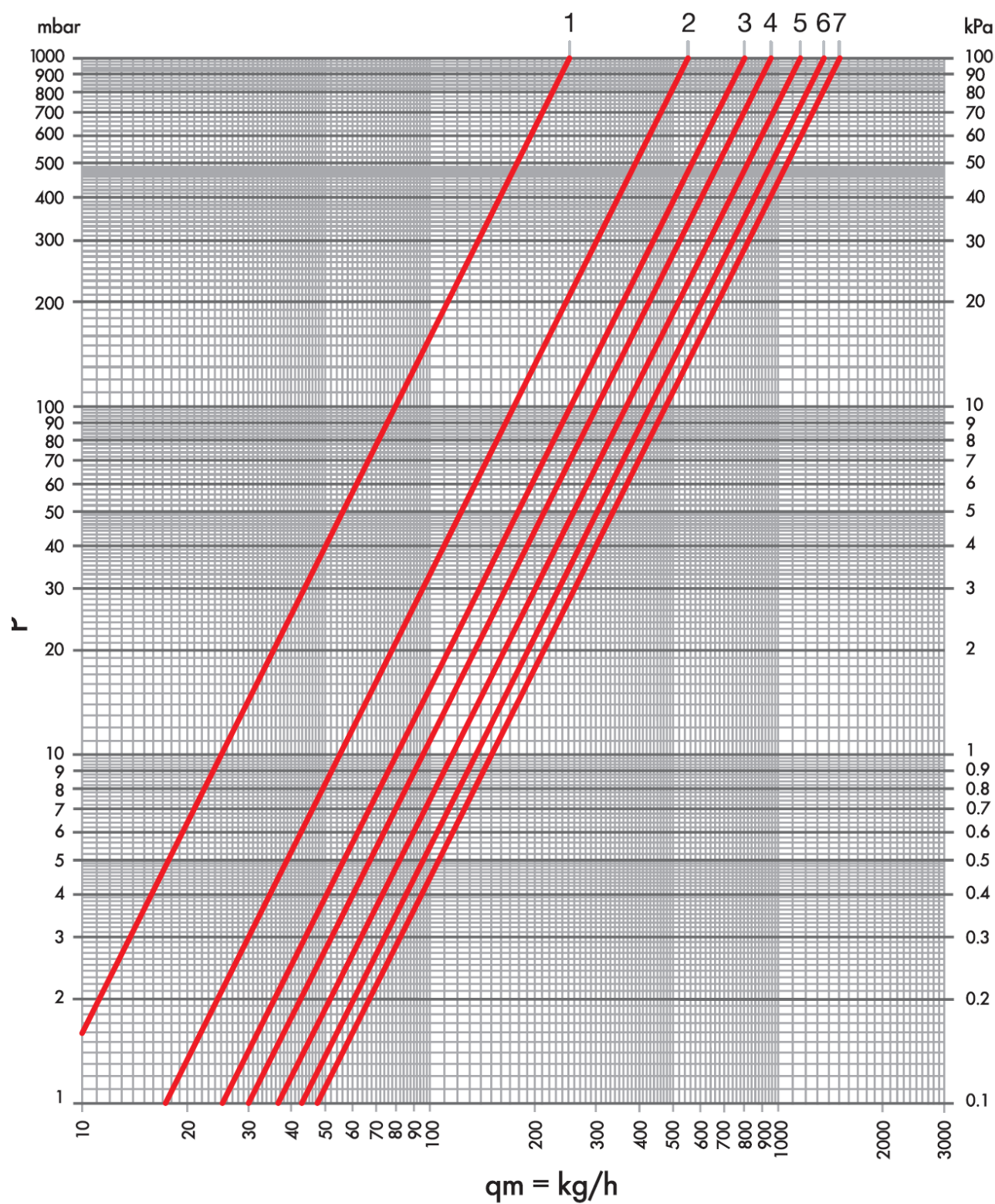
Code	Size	F	G	H	L	M
14232703	DN15 1/2	G3/4 Ek	-	G1/2	28	-
14232703CB	DN15 1/2	G3/4 Ek	-	G1/2	28	-
14232703B	DN15 1/2	G3/4 Ek	-	G1/2	28	-

Hydraulic Characteristics



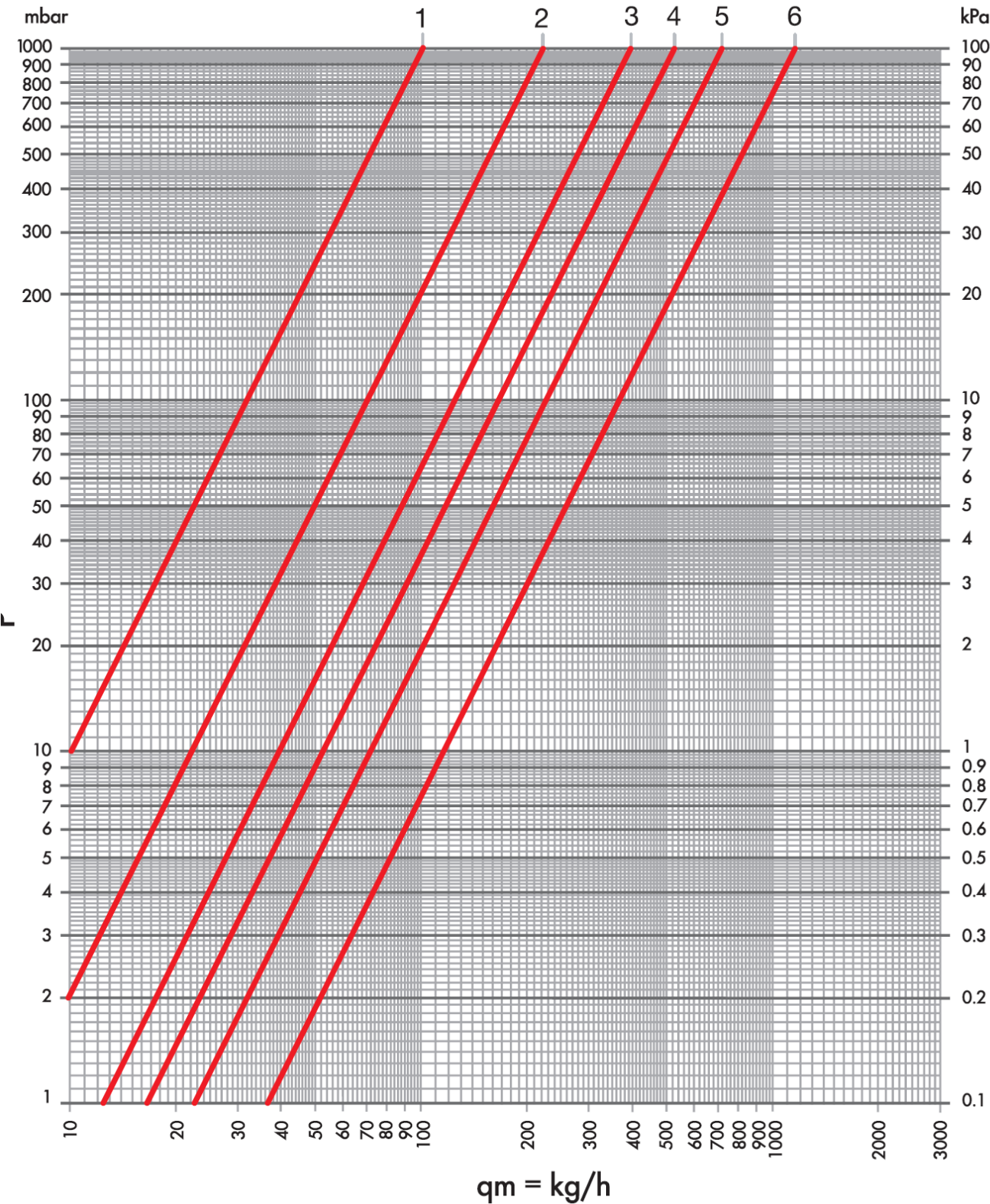
Curve	Kv	Items
1	1.85	RS 58/A 1/2; RS 59/A 1/2; RCD 69/A 1/2; RCS 73/A 1/2

Hydraulic Characteristics



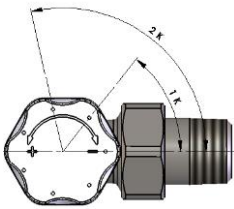
Position	Turns	Kv	Items
1	1	0.25	
2	1+1/2	0.55	
3	2	0.80	
4	2+1/2	0.95	DD 78/A 1/2; DS 79/A 1/2; DCD 29/A 1/2; DCS 33/A 1/2
5	3	1.15	
6	3+1/2	1.35	
7	All open	1.50	

Hydraulic Characteristics



Curve	Kv	Kv Δt 1°C	Kv Δt 2°C	Items
1	0.10	0.11	0.15	RD 258/A 1/2 + RS 259/A 1/2; RCD 269/A 1/2 + RCS273/A 1/2; RD 2058/A 1/2 + RS 2059/A 1/2; RCD 2069/A 1/2 + RCS 2073/A 1/2
2	0.22	0.16	0.25	
3	0.39	0.18	0.36	
4	0.52	0.18	0.37	
5	0.71	0.19	0.43	
6	1.25	0.20	0.50	

Working Instructions



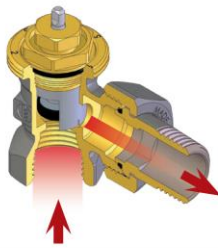
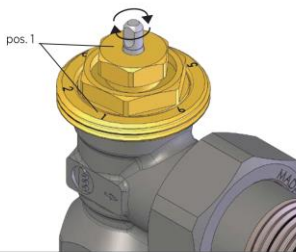
- **PROTECTION CAP:** Protects the thread during installation and allows for full closing of the valve. It enables to calibrate the nominal lift as follows:
 - Turn the cap until the valve is completely closed without forcing;
 - Draw a reference line on the valve body corresponding with one of the cap's notches;
 - Unplug the cap for two notches.



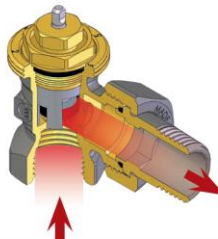
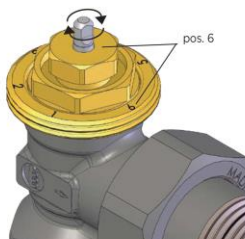
- **STEM SEALING:** The tightening device can be easily replaced without draining the system:
 - Unscrew the hexagonal collar by means of a 13 mm wrench;



- Remove the O-ring "A", clean the stainless steel stem and insert a new O-ring "A";
- Screw the collar tightly back.



- **FLOW RATE ADJUSTMENT:** To set the maximum flow rate:
 - Align the reference mark "B" on the stainless steel stem with one of the positions printed on the valve body.



- **WARNING:** Once the system has been leak tested, please relieve the pressure. A differential pressure over 1 bar between the inlet and the outlet of the valve may cause the sealing O-ring to be expelled.

Item Specifications

RS 259/A

Design angle radiator valve, thermostatically or electronically controlled with white ABS protection cap. Connection for copper, plastic and multilayer pipe 3/4"M Eurokonus. 1/2"M radiator connection prefitted with peroxide cured EPDM O-ring, cylindrical thread and O-ring. Valve body in chrome-plated or varnished RAL9016 white CW617N brass. CB and B). Double peroxide cured EPDM O-ring on the AISI 316 stainless steel stem. Max. working temperature 120 °C, max. pressure 10 bar, differential pressure 1 bar.

RD 258/A

Design straight radiator valve, thermostatically or electronically controlled with white ABS protection cap. Connection for copper, plastic and multilayer pipe 3/4"M Eurokonus. 1/2"M radiator connection prefitted with peroxide cured EPDM O-ring, cylindrical thread and O-ring. Valve body in chrome-plated or varnished RAL9016 white CW617N brass. CB and B). Double peroxide cured EPDM O-ring on the AISI 316 stainless steel stem. Max. working temperature 120 °C, max. pressure 10 bar, differential pressure 1 bar.

RS 2059/A

Design angle radiator valve, thermostatically or electronically controlled, with manual control knob in chrome-plated ABS. Connection for copper, plastic and multilayer pipe 3/4"M Eurokonus. 1/2"M radiator connection prefitted with peroxide cured EPDM O-ring, cylindrical thread and O-ring. Valve body in chrome-plated or varnished RAL9016 white CW617N brass. CB and B). Double peroxide cured EPDM O-ring on the AISI 316 stainless steel stem. Max. working temperature 120 °C, max. pressure 10 bar, differential pressure 1 bar.

RD 2058/A

Design straight radiator valve, thermostatically or electronically controlled, with manual control knob in chrome-plated ABS. Connection for copper, plastic and multilayer pipe 3/4"M Eurokonus. 1/2"M radiator connection prefitted with peroxide cured EPDM O-ring, cylindrical thread and O-ring. Valve body in chrome-plated or varnished RAL9016 white CW617N brass. CB and B). Double peroxide cured EPDM O-ring on the AISI 316 stainless steel stem. Max. working temperature 120 °C, max. pressure 10 bar, differential pressure 1 bar.

RCD 269/A

Design coaxial right radiator valve, thermostatically or electronically controlled with white ABS protection cap. Connection for copper, plastic and multilayer pipe 3/4"M Eurokonus. 1/2"M radiator connection prefitted with peroxide cured EPDM O-ring, cylindrical thread and O-ring. Valve body in chrome-plated or varnished RAL9016 white CW617N brass. CB and B). Double peroxide cured EPDM O-ring on the AISI 316 stainless steel stem. Max. working temperature 120 °C, max. pressure 10 bar, differential pressure 1 bar.

RCS 273/A

Design coaxial left radiator valve, thermostatically or electronically controlled with white ABS protection cap. Connection for copper, plastic and multilayer pipe 3/4"M Eurokonus. 1/2"M radiator connection prefitted with peroxide cured EPDM O-ring, cylindrical thread and O-ring. Valve body in chrome-plated or varnished RAL9016 white CW617N brass. CB and B). Double peroxide cured EPDM O-ring on the AISI 316 stainless steel stem. Max. working temperature 120 °C, max. pressure 10 bar, differential pressure 1 bar.

RCD 2069/A

Design coaxial right radiator valve, thermostatically or electronically controlled, with manual control knob in chrome-plated ABS. Connection for copper, plastic and multilayer pipe 3/4"M Eurokonus. 1/2"M radiator connection prefitted with peroxide cured EPDM O-ring, cylindrical thread and O-ring. Valve body in chrome-plated or varnished RAL9016 white CW617N brass. CB and B). Double peroxide cured EPDM O-ring on the AISI 316 stainless steel stem. Max. working temperature 120 °C, max. pressure 10 bar, differential pressure 1 bar.

RCS 2073/A

Design coaxial left radiator valve, thermostatically or electronically controlled, with manual control knob in chrome-plated ABS. Connection for copper, plastic and multilayer pipe 3/4"M Eurokonus. 1/2"M radiator connection prefitted with peroxide cured EPDM O-ring, cylindrical thread and O-ring. Valve body in chrome-plated or varnished RAL9016 white CW617N brass. CB and B). Double peroxide cured EPDM O-ring on the AISI 316 stainless steel stem. Max. working temperature 120 °C, max. pressure 10 bar, differential pressure 1 bar.

RS 59/A

Design angle radiator valve with manual control knob in chrome-plated ABS. Connection for copper, plastic and multilayer pipe 3/4"M Eurokonus. 1/2"M radiator connection prefitted with peroxide cured EPDM O-ring, cylindrical thread and O-ring. Valve body in chrome-plated or varnished RAL9016 white CW617N brass. CB and B). Max. working temperature 120 °C, max. pressure 10 bar, differential pressure 1 bar.

RD 58/A

Design straight radiator valve with manual control knob in chrome-plated ABS. Connection for copper, plastic and multilayer pipe 3/4"M Eurokonus. 1/2"M radiator connection prefitted with peroxide cured EPDM O-ring, cylindrical thread and O-ring.

Valve body in chrome-plated or varnished RAL9016 white CW617N brass. CB and B). Max. working temperature 120 °C, max. pressure 10 bar, differential pressure 1 bar.

DS 79/A

Design angle regulating lockshield valve with chrome-plated ABS plug. Connection for copper, plastic and multilayer pipe 3/4"M Eurokonus. 1/2"M radiator connection prefitted with peroxide cured EPDM O-ring, cylindrical thread and O-ring. . Valve body in chrome-plated or varnished RAL9016 white CW617N brass. CB and B). Max. working temperature 120 °C, max. pressure 10 bar, differential pressure 1 bar.

DD 78/A

Design straight regulating lockshield valve with chrome-plated ABS plug. Connection for copper, plastic and multilayer pipe 3/4"M Eurokonus. 1/2"M radiator connection prefitted with peroxide cured EPDM O-ring, cylindrical thread and O-ring. Valve body in chrome-plated or varnished RAL9016 white CW617N brass. CB and B). Max. working temperature 120 °C, max. pressure 10 bar, differential pressure 1 bar.

RCD 69/A

Design coaxial right radiator valve with manual control knob in chrome-plated ABS. Connection for copper, plastic and multilayer pipe 3/4"M Eurokonus. 1/2"M radiator connection prefitted with peroxide cured EPDM O-ring, cylindrical thread and O-ring. Valve body in chrome-plated or varnished RAL9016 white CW617N brass. CB and B). Max. working temperature 120 °C, max. pressure 10 bar, differential pressure 1 bar.

RCS 73/A

Design coaxial left radiator valve with manual control knob in chrome-plated ABS. Connection for copper, plastic and multilayer pipe 3/4"M Eurokonus. 1/2"M radiator connection prefitted with peroxide cured EPDM O-ring, cylindrical thread and O-ring. Valve body in chrome-plated or varnished RAL9016 white CW617N brass. CB and B). Max. working temperature 120 °C, max. pressure 10 bar, differential pressure 1 bar.

DCS 33/A

Design coaxial left regulating lockshield valve with chrome-plated ABS plug. Connection for copper, plastic and multilayer pipe 3/4"M Eurokonus. 1/2"M radiator connection prefitted with peroxide cured EPDM O-ring, cylindrical thread and O-ring. . Valve body in chrome-plated or varnished RAL9016 white CW617N brass. CB and B). Max. working temperature 120 °C, max. pressure 10 bar, differential pressure 1 bar.

DCD 29/A

Design coaxial right regulating lockshield valve with chrome-plated ABS plug. Connection for copper, plastic and multilayer pipe 3/4"M Eurokonus. 1/2"M radiator connection prefitted with peroxide cured EPDM O-ring, cylindrical thread and O-ring. . Valve body in chrome-plated or varnished RAL9016 white CW617N brass. CB and B). Max. working temperature 120 °C, max. pressure 10 bar, differential pressure 1 bar.



Luxor S.p.A.

Sede amministrativa, stabilimento e uffici commerciali:

Administrative office, factory and commercial office:

Tel.: 030-9961161 – Fax: 030-9961165

info@luxor.it – www.luxor.it

via Madonnina, 94 – 25018 Montichiari - (BS) Italy

*Luxor si riserva il diritto di apportare miglioramenti e modifiche ai prodotti descritti ed ai relativi dati tecnici in qualsiasi momento e senza preavviso -
Luxor reserves the right to ameliorate and modify the above products and their technical data at any time and without notice*