

Function

The taps series 50th offer all the quality and guarantee of a Made in Italy product. The entire range is finished with a chrome plating which ensures a thicker coating and, as a consequence, a better resistance to ageing and corrosion.



Technical data

Maximum working pressure: 10 bar

Maximum working temperature: 90°C

Materials

Tap body: CW 617 N – DW UNI-EN 12165:2016

Fittings: CW 614 N – DW UNI-EN 12164:2016

Screw: CW 614 N – DW UNI-EN 12164:2016

Cartridge: CW 614 N – DW UNI-EN 12164:2016 + NBR + Nylon

Gaskets: peroxide cured EPDM

Handle: ABS with chromed finish

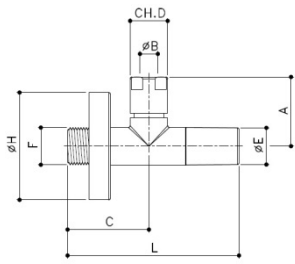
Finish

Hard chrome plating

Dimensional drawings

S 53

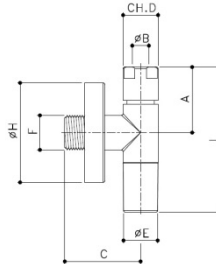
Kit consisting of: 2 undersink screw taps with fixed stem, sliding wall cover and 3 pcs cartridge..



Code	Size	A	B	C	D	E
70952101CC	G1/2 - G3/8	39	10	46	19	21
Code	Size	F	G	H	L	M
70952101CC	G1/2 - G3/8	G1/2	-	60	96	-

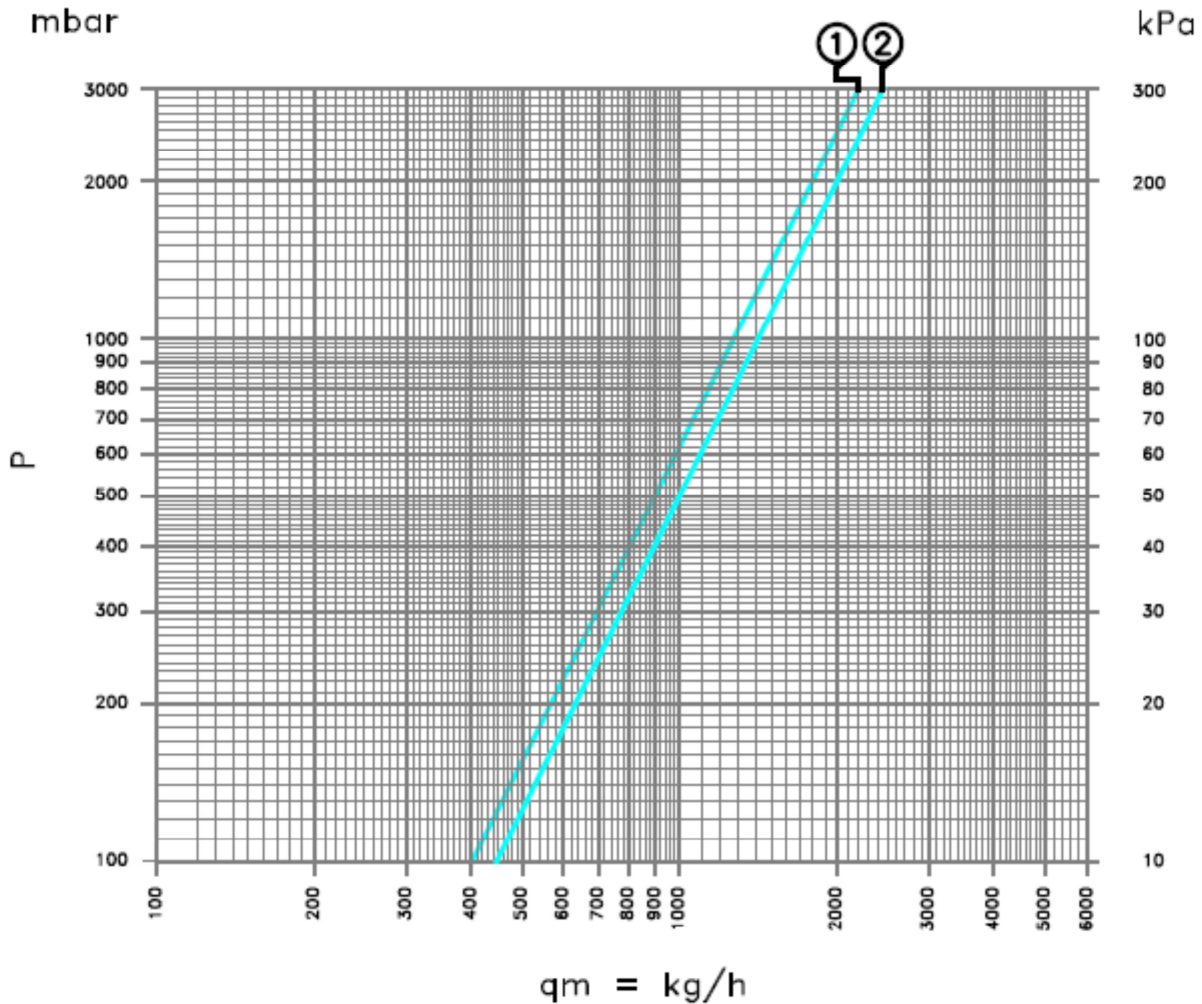
S 54

Kit consisting of: 2 undersink screw taps with fixed stem, sliding wall cover and 3 pcs cartridge..



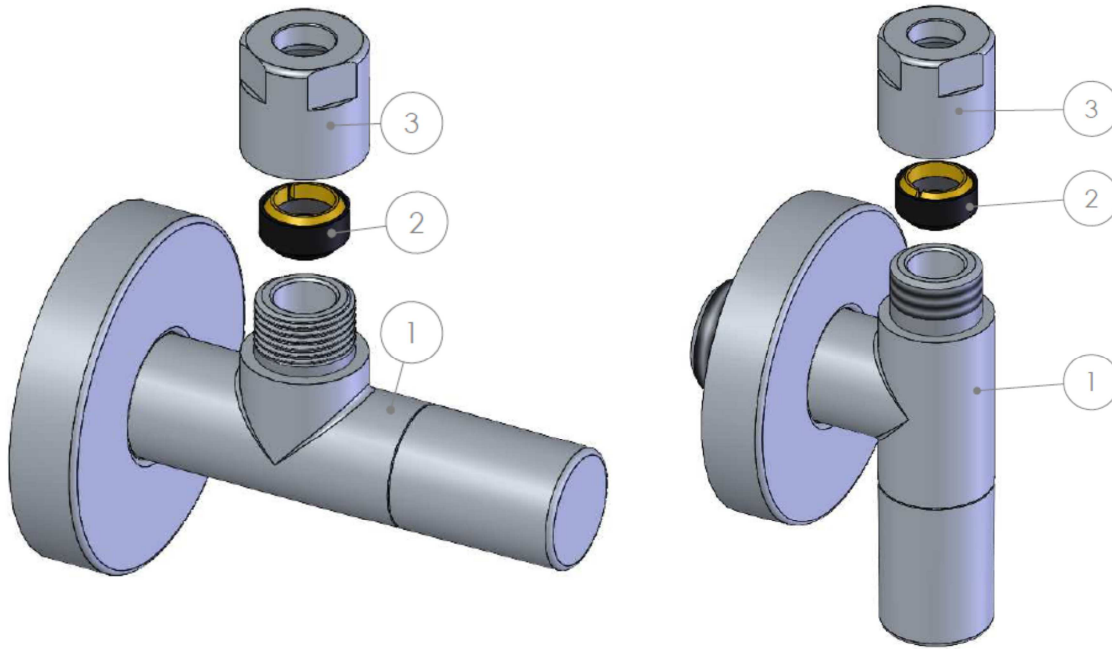
Code	Size	A	B	C	D	E
70972101CC	G1/2 - G3/8	39	10	46	19	21
Code	Size	F	G	H	L	M
70972101CC	G1/2 - G3/8	G1/2	-	60	88	-

Caratteristiche idrauliche



Curva	Kv	Articoli
1	1,41	S 53
2	1,45	S 54

Assembly instructions



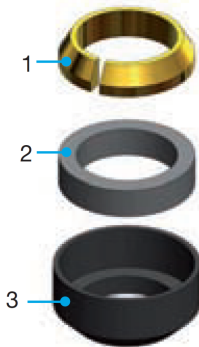
For a correct assembly of the undersink taps, please follow the above steps, checking carefully the assembly direction of the cartridge and the gaskets.

It is important to first connect the nipple with wall cover to the water distribution net, then correctly insert the gaskets between the elbow and the nipple, insert the RCC cartridge into the clamping nut paying attention to the assembly direction, and finally tighten the fitting to the pipe.

Warning:

- **Check the correct direction of the cartridge;**
- **Suggested tightening torque: from 25 to 30 Nm max.**

RCC cartridge



- 1. Tightening washer made of brass CW 614 N-DW UNI-EN 12164:2016**
The brass washer has high mechanical qualities thanks to the annealing process which improves the malleability of the material, ensuring the correct coupling between the fitting and the pipe without applying an excessive clamping force.
- 2. Internal gasket made of NBR**
Range of use for temperature up to 90°C: NBR gaskets have good mechanical qualities, low permanent deformation and low gas permeability.
- 3. External cartridge made of Nylon (Polyamide 6.6)**
Range of use for temperature up to 90°C: the Nylon cartridge has good mechanical qualities, high toughness and high shock resistance.

The RCC cartridge is the most safe and functional solution for the connection of the undersink taps to the final utilities. Being composed of three parts gathered in one single body, the RCC cartridge is the final solution to the installation problems of the compression fittings. No more parts lost or wrongly assembled, but one single piece which ensures an excellent mechanical and hydraulic tightness.



Luxor S.p.A.
Sede amministrativa, stabilimento e uffici commerciali:
Administrative office, factory and commercial office:
Tel.: 030-9961161 – Fax: 030-9961165
info@luxor.it – www.luxor.it

via Madonnina, 94 – 25018 Montichiari - (BS) Italy

*Luxor si riserva il diritto di apportare miglioramenti e modifiche ai prodotti descritti ed ai relativi dati tecnici in qualsiasi momento e senza preavviso -
Luxor reserves the right to ameliorate and modify the above products and their technical data at any time and without notice*

Function

The taps series 50th offer all the quality and guarantee of a Made in Italy product. The entire range is finished with a black powder coat.



Technical data

Maximum working pressure: 10 bar

Maximum working temperature: 90°C

Materials

Tap body: CW 617 N – DW UNI-EN 12165:2016

Fittings: CW 614 N – DW UNI-EN 12164:2016

Screw: CW 614 N – DW UNI-EN 12164:2016

Cartridge: CW 614 N – DW UNI-EN 12164:2016 + NBR + Nylon

Gaskets: peroxide cured EPDM

Handle: ABS with black powder coat

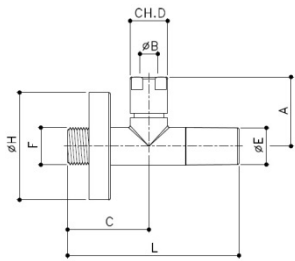
Finish

Black powder coat

Dimensional drawings

S 53

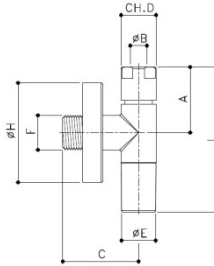
Kit consisting of: 2 undersink screw taps with fixed stem, sliding wall cover and 3 pcs cartridge..



Code	Size	A	B	C	D	E
70952101CCN	G1/2 - G3/8	39	10	46	19	21
Code	Size	F	G	H	L	M
70952101CCN	G1/2 - G3/8	G1/2	-	60	96	-

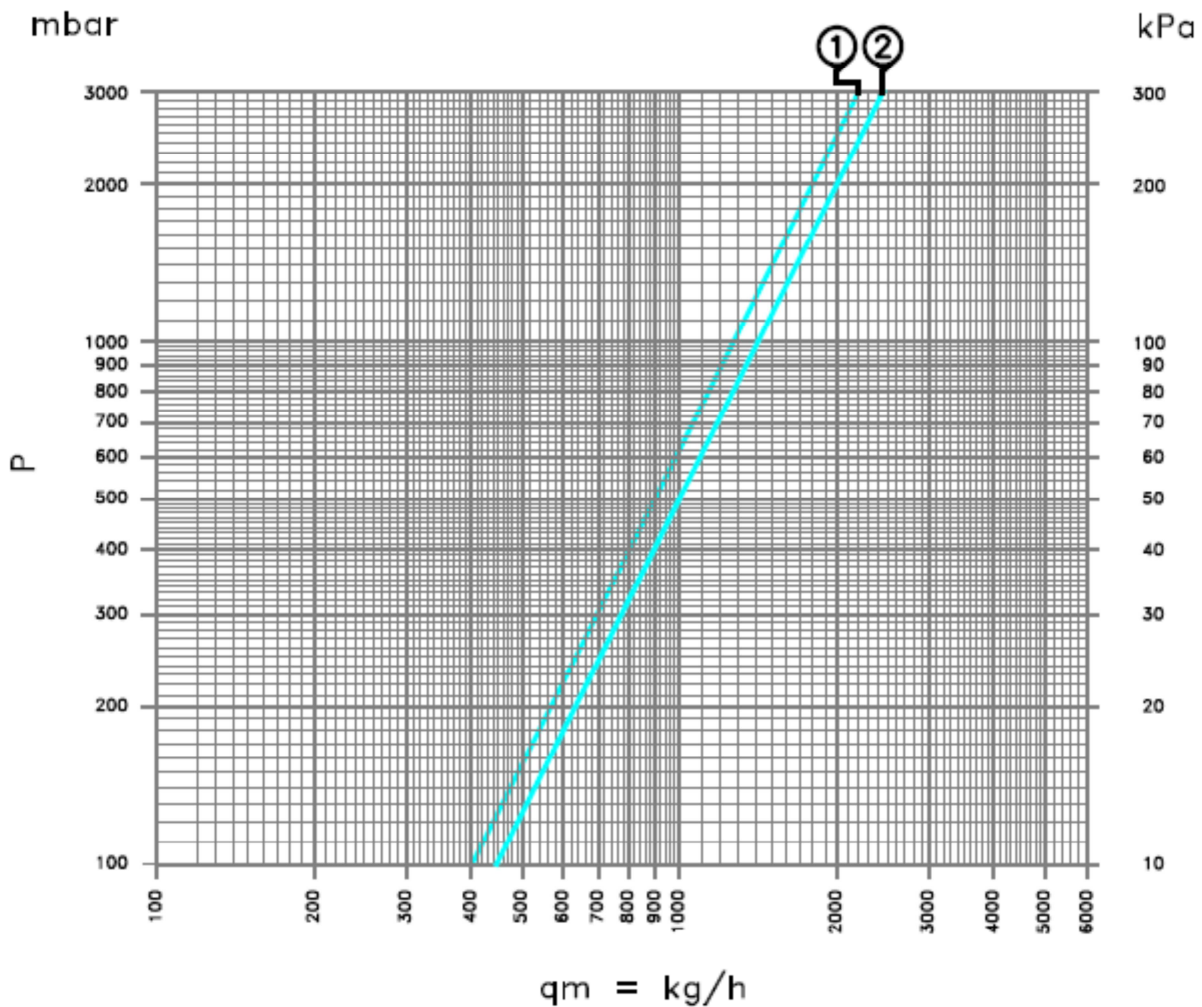
S 54

Kit consisting of: 2 undersink screw taps with fixed stem, sliding wall cover and 3 pcs cartridge..



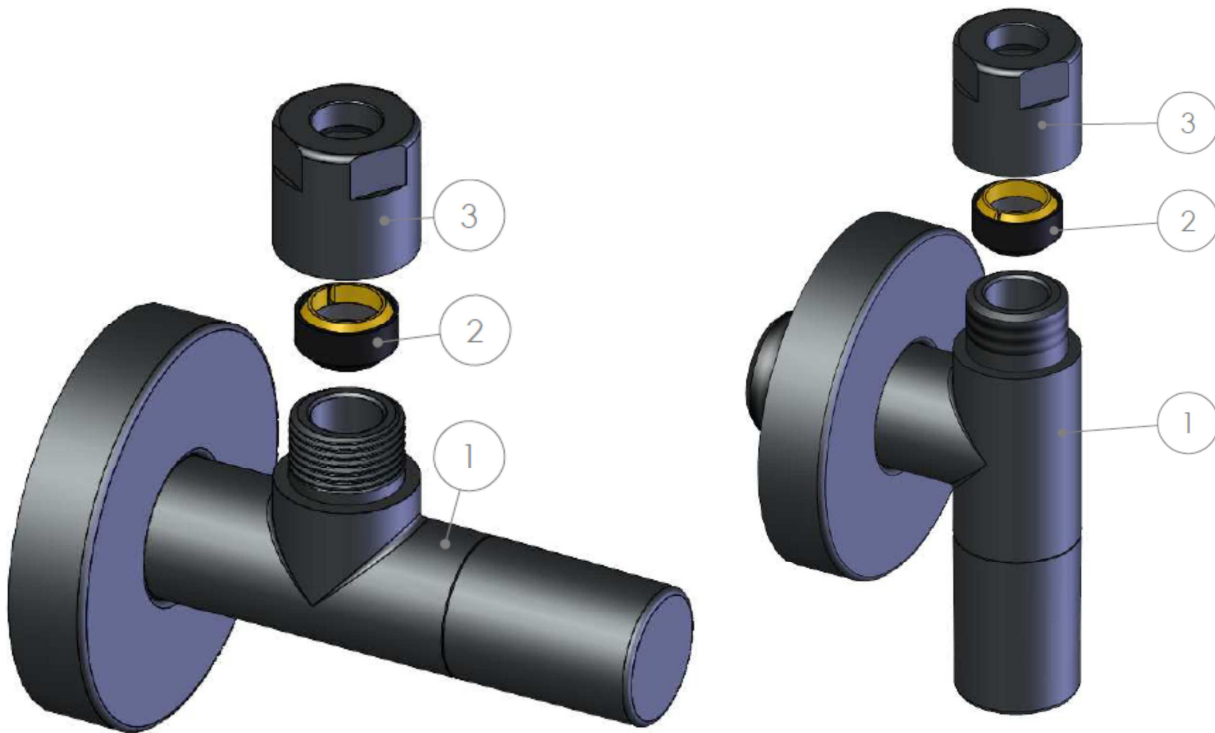
Code	Size	A	B	C	D	E
70972101CCN	G1/2 - G3/8	39	10	46	19	21
Code	Size	F	G	H	L	M
70972101CCN	G1/2 - G3/8	G1/2	-	60	88	-

Caratteristiche idrauliche



Curva	Kv	Articoli
1	1,41	S 53
2	1,45	S 54

Assembly instructions



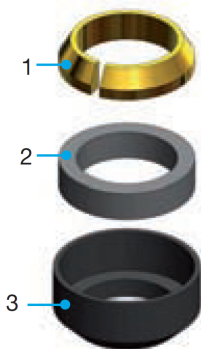
For a correct assembly of the undersink taps, please follow the above steps, checking carefully the assembly direction of the cartridge and the gaskets.

It is important to first connect the nipple with wall cover to the water distribution net, then correctly insert the gaskets between the elbow and the nipple, insert the RCC cartridge into the clamping nut paying attention to the assembly direction, and finally tighten the fitting to the pipe.

Warning:

- **Check the correct direction of the cartridge;**
- **Suggested tightening torque: from 25 to 30 Nm max.**

RCC cartridge



- 1. Tightening washer made of brass CW 614 N-DW UNI-EN 12164:2016**
The brass washer has high mechanical qualities thanks to the annealing process which improves the malleability of the material, ensuring the correct coupling between the fitting and the pipe without applying an excessive clamping force.
- 2. Internal gasket made of NBR**
Range of use for temperature up to 90°C: NBR gaskets have good mechanical qualities, low permanent deformation and low gas permeability.
- 3. External cartridge made of Nylon (Polyamide 6.6)**
Range of use for temperature up to 90°C: the Nylon cartridge has good mechanical qualities, high toughness and high shock resistance.

The RCC cartridge is the most safe and functional solution for the connection of the undersink taps to the final utilities. Being composed of three parts gathered in one single body, the RCC cartridge is the final solution to the installation problems of the compression fittings. No more parts lost or wrongly assembled, but one single piece which ensures an excellent mechanical and hydraulic tightness.



Luxor S.p.A.
Sede amministrativa, stabilimento e uffici commerciali:
Administrative office, factory and commercial office:
Tel.: 030-9961161 – Fax: 030-9961165
info@luxor.it – www.luxor.it

via Madonna, 94 – 25018 Montichiari - (BS) Italy

*Luxor si riserva il diritto di apportare miglioramenti e modifiche ai prodotti descritti ed ai relativi dati tecnici in qualsiasi momento e senza preavviso -
Luxor reserves the right to ameliorate and modify the above products and their technical data at any time and without notice*